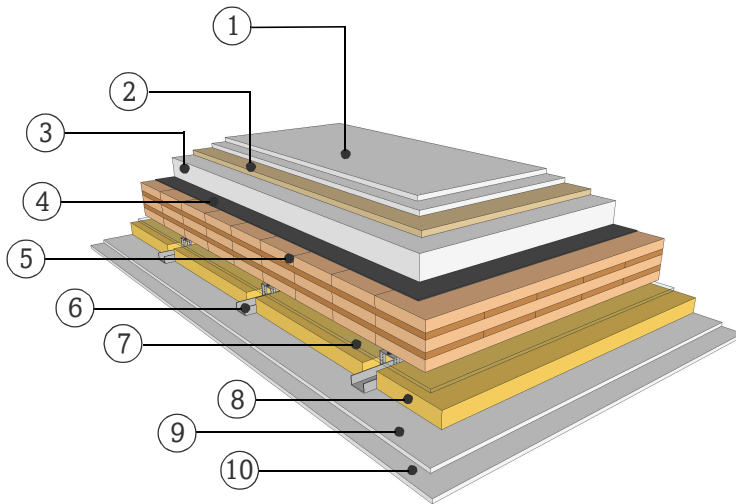


DATASHEET

COMPARTMENT FLOOR WITH DRY SCREED

GD14.07

SUPENDED CEILING ON RESILIENT CLIPS



FIRE RESISTANCE

Pre-dimensioning one-sided fire attack

R*EI 30 > 3s 80 TL

R*EI 60 > 5s 120 TL

R*EI 90 > 5s 150 TL

*For residual load capacity or alternative design see <https://www.klhdesigner.at/>

SOUND INSULATION

$R_w (C;C_{tr})$ 67 (-2;-7) [dB]

$L_{n,w} (C_i)$ 51 (0) [dB]

<https://www.klh.at/en/online-component-catalogue/>

THERMAL PROTECTION

U 0,31 [W/m²K]

$m_{w,B,A}$ 36/45 [kg/m²]

MATERIAL

PROPERTIES

	[mm]		λ [W/mK]	μ min-max [-]	ρ [kg/m ³]	c [kJ/kgK]	
①	18.0	Gypsum fiberboard dry screed	0.25	17	1250	1	A1
②	8.0	Impact sound insulation, wood fiberboard	0.07	5	250	2.5	E
③	60.0	Dry fill, PA Knauf	0.23	2	490	1	
④		Separating layer					
⑤	150.0	TL, KLH solid timber slab	0.12	50 - 300	470	1.6	D
⑥	60.0	Light weight C-profiles on resilient clips					A1
⑦	10.0	Air gap					
⑧	50.0	Mineral wool, low density	0.04	1	15-30	1	A1
⑨	12.5	Gypsum fiberboard	0.25	10	1000	1.1	A2
⑩	12.5	Gypsum fiberboard	0.25	10	1400	1.2	A2

Thickness 321,0 [mm]

Mass per squaremeter ca. 165 [kg/m²]

Test report sound: HFA 2592/2014-BB
Calculation of the physical values by the
KLH Massivholz GmbH, without warranty